

Lesson 22

Mythical Beasts & Monsters

1.

Hera-shaped cloud



+



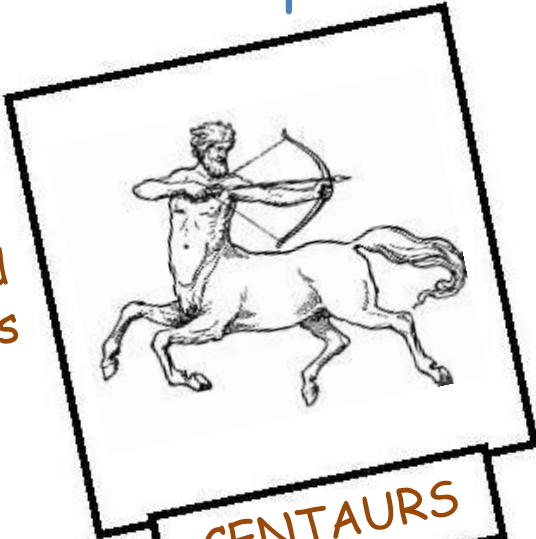
King Ixion



Ixion punished
in Tartarus
on flaming wheel

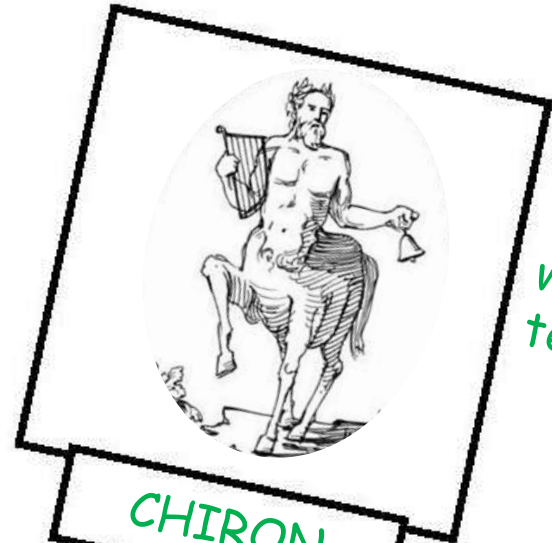


wild
beasts



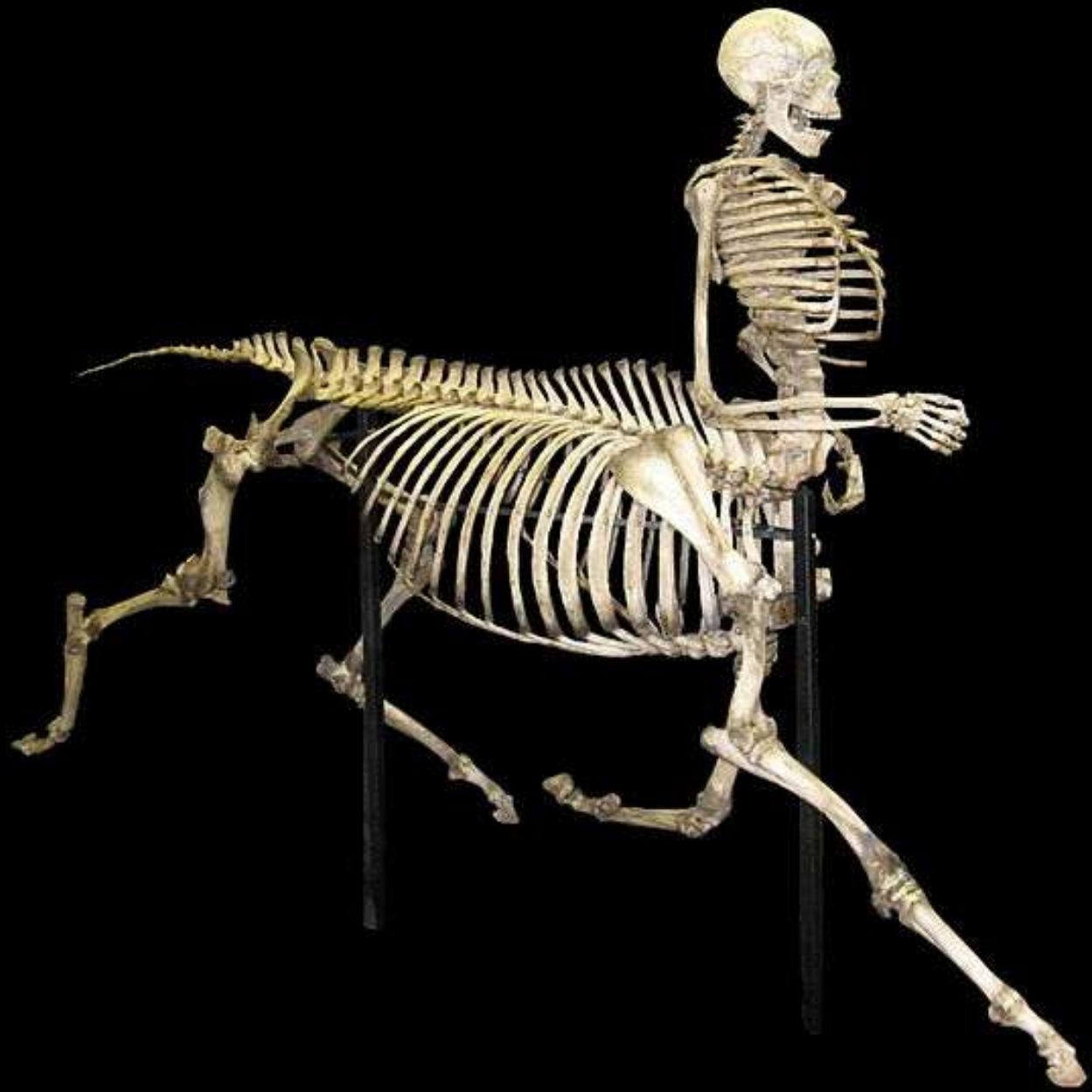
CENTAURS

wise
teacher



CHIRON









2.

BELLEROPHON



PEGASUS

sprang from
Medusa's blood

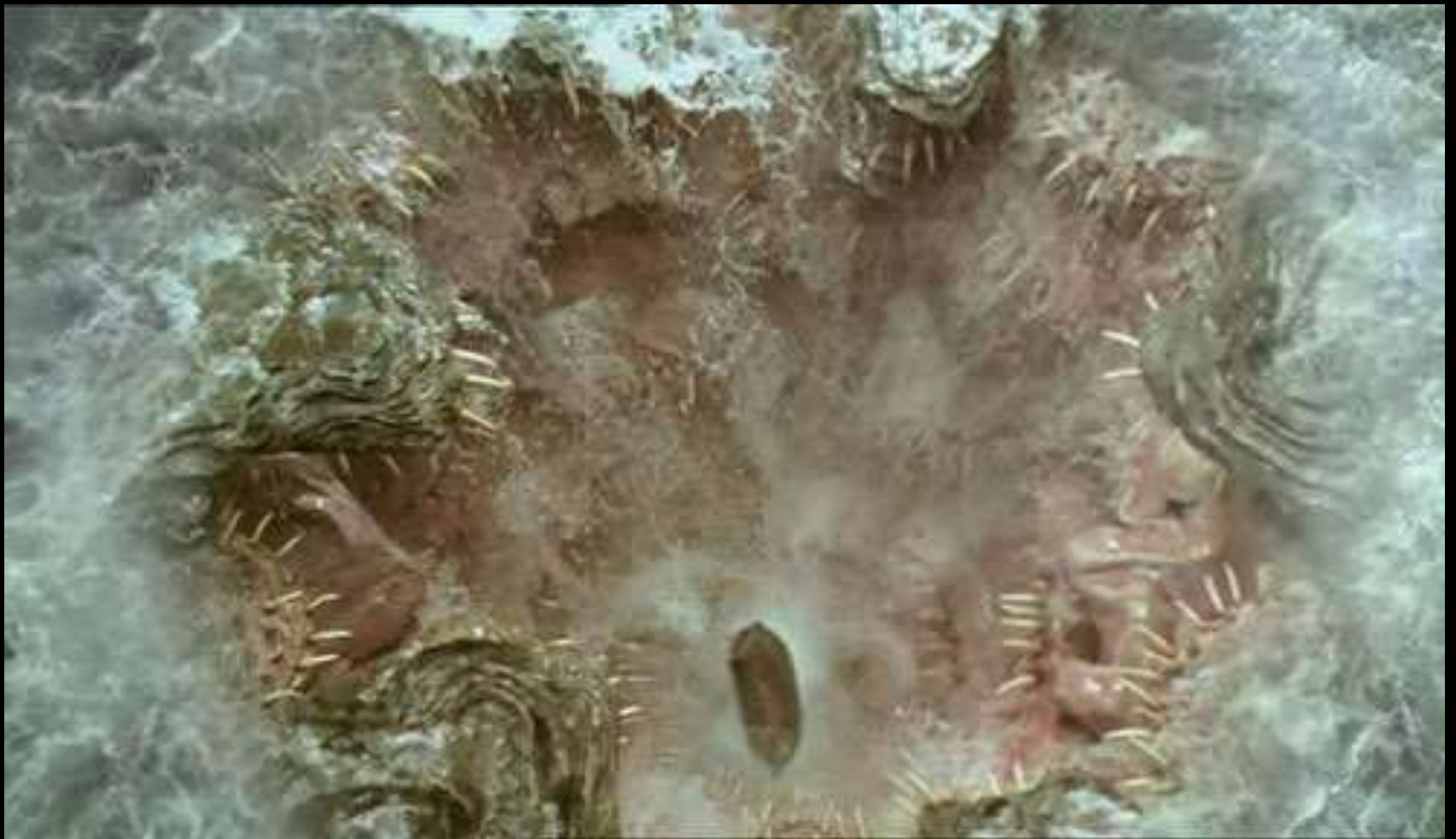
killed

CHIMERA











3.

Monsters



CHARYBDIS

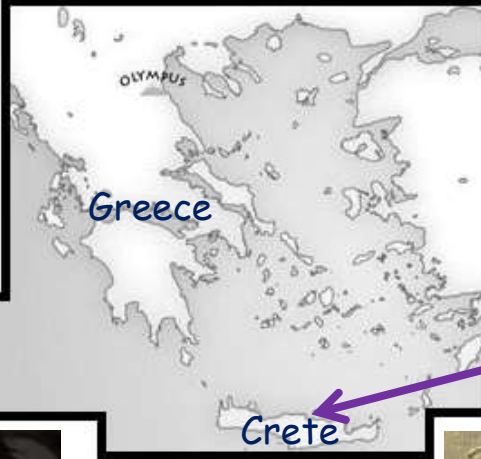


SCYLLA

SPHINX



asked riddle



$\frac{1}{2}$ man $\frac{1}{2}$ bull
in Labyrinth

MINOTAUR



HYDRA



killed by
Theseus





